

**DH1350**



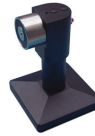
**Product Overview**

**WALL MOUNT DOOR HOLDER**

- 50Kg holding force
- Aluminium & thermoplastic housing (wall mount)
- Rated voltage 24VDC / Operating current 45mA

DH1350 Also available in 100KG - DH1360

**DH150**



**Product Overview**

**150MM POST FLOOR/WALL MOUNT DOOR HOLDER**

- Floor or wall mount with 150mm post
- 50Kg holding force
- Rated voltage 24VDC
- Operating current 45mA

**DH300**

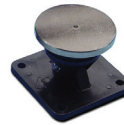


**Product Overview**

**WALL/FLOOR DOOR MOUNT**

- Floor or wall mount with 300mm post
- 50Kg holding force
- Rated voltage 24VDC
- Operating current 45mA

**DHANVIL**



**Product Overview**

**DOOR HOLDER ANVIL 1350**

Anvil to suit DH150 and DH300

**DRS004**



**Product Overview**

**DOOR RELEASE SWITCH**

- Press switch to release door holder
- Standard GPO plate size
- Between 50 & 150 tests per capsule

**WARNSLID**



**Product Overview**

SLIDING FIRE DOOR SIGN

**REM-CL/CS /CU/RM**



**Product Overview**

**REMOTE INDICATORS**

- REM-CL - IN CEILING
- REM-CS - IN CONCEALED SPACE
- REM-CU - IN CUPBOARD
- REM-RM - IN ROOM

**PS408-M3D**



**Product Overview**

**PS408-M3D 10AMP POWER SUPPLY**

- 10A, Regulated true 24V output
- Activfire listed AFP-2793
- Intelligent battery charging and temperature compensation
- Status indicators for monitored faults
- Low battery shut off to prevent deep discharge of batteries
- Power ON indicator - Green LED

**PS407-M2D  
PS406-M3  
PS406-M3D**



**Product Overview**

**PS408-M3D 10AMP POWER SUPPLY**

- 2.5A = PS407-M2D
- 5.25A = PS406-M3 / PS406-M3D
- Regulated true 24V output
- Activfire listed AFP-2793
- Intelligent battery charging and temperature compensation
- Status indicators for monitored faults
- Low battery shut off to prevent deep discharge of batteries
- Power ON indicator - Green LED

**Product Sizes**

- PS406-M3 = 24V-5.25A PSU CABINET, UP TO 22AH (385W X 520H X 110D)
- PS406-M3D = 24V-5.25A PSU CABINET, UP TO 26AH (385W X 520H X 200D)
- PS407-M2D = 24V-2.5A PSU CABINET, UP TO 12AH (385W X 310H X 110D)