

TAKTIS Technical Catalogue

Version 2.2 2021



Taktis

Analogue Addressable 2-16 Loop Control Panels



TAKTIS-TS1
TAKTIS FIRE PANEL
 (H) 585 x (W) 420 x (D) 167



TAKTIS-TS2
TAKTIS FIRE PANEL
 (H) 710 x (W) 500 x (D) 169



TAKTIS-TS3
TAKTIS FIRE PANEL
 (H) 1065 x (W) 560 x (D) 239

Product Overview

The Taktis product range combines the very latest hardware and software to produce a control and indication system, which is powerful and sophisticated, yet simple to use and understand.

The large graphical touch screen provides a clear, uncluttered and intuitive interface so the end user requires minimal training.

Available in 4 slot and 8 slot variants, with each slot supporting a 2 loop detection card, the Taktis fire control panel ranges from 2 to 16 detection loops.

The generous quantity of sounder circuits, relays and inputs provided as standard can be further increased by the addition of one or more Taktis I/O plug in expansion cards.

The Taktis Network Card allows networking of up to 128 panels and repeaters meaning that Taktis can provide reassurance to all building owners/ operators whether responsible for a small system or a large complex.

Taktis Vision panels can be connected to the Taktis network to provide a fully functional repeater in a compact enclosure.

The remote management features offered by Virtual Resource can result in reduced fault calls, improved technical support, efficient and proven maintenance, reduction of unwanted alarms, a full audit trail and improved overall service to the end user.

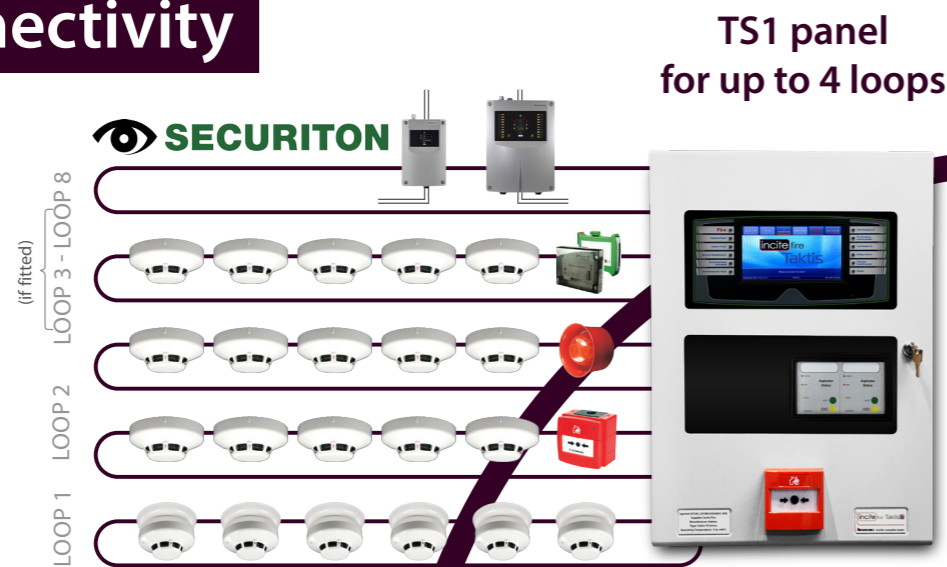
Standard Features

- 2 to 8 loop or 2 to 16 loop versions
- 500 milliamp loop current
- 4 programmable sounder circuits each rated at 2.5 Amps
- 5.25 Amp or 10.25 Amp power supply options
- 3 programmable inputs
- 5 programmable relay outputs
- Ancillary configurable facia controls
- Up to 512 programmable I/O via optional plug in and serially connected expansion cards
- Hard wired fire and fault routing inputs and outputs
- Modular electronics
- Over 4000 sub address points per panel
- COINCIDENCE, OR and AND operators in cause and effects
- Option to "invert" inputs and outputs
- Powerful, standard configuration templates
- Network up to 128 panels
- Configurable via USB port to PC or memory stick

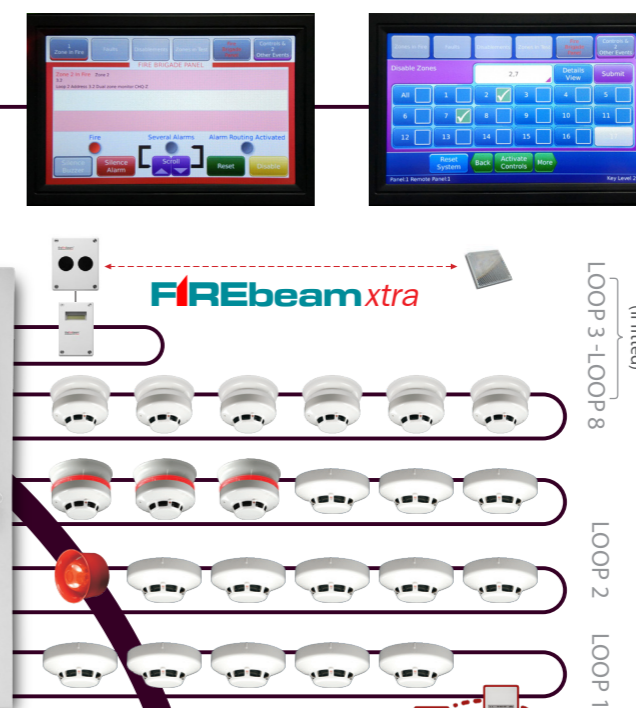


HOCHIKI SYSTEM (2-16 LOOP TAKTIS PANEL)

ASD Connectivity



TS2 panel for up to 8 loops



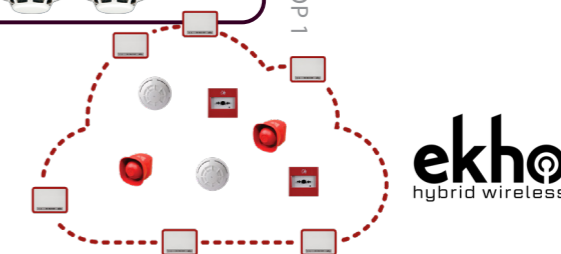
Beam Connectivity

Taktis Vision Connectivity



HOCHIKI (2-16 Loop TAKTIS Panel)

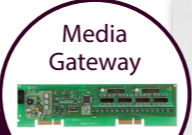
Wireless Connectivity



VR Nimbus



Fibre Network



Cloud Servers

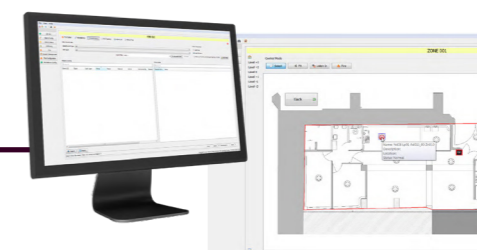
GSM IP Dial-Up

Vizulinx



TS3 panel for up to 16 loops

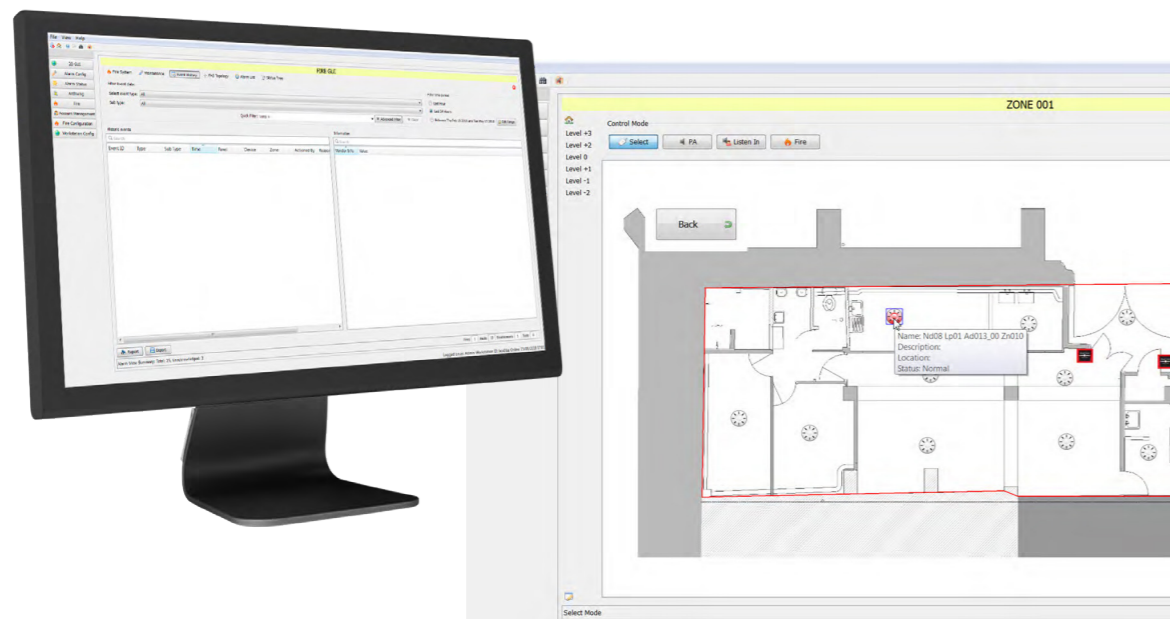
Ockular



OCKULAR

A powerful and sophisticated software solution, Ockular gives building managers complete monitoring and control over fire detection, providing a comprehensive fire risk and incident management system.

Where time is of the essence, site managers can respond quickly and efficiently to a fire event. Ockular plays a crucial role in safeguarding people, vitally important information and property.



Product Overview

Visual Fire Management

Ockular can automatically switch to the area on the site map to where a fire device has been activated to quickly view an event and begin immediate investigation. In addition, it will show the relevant muster and fire control points.

Immediate Response

With Ockular, operators and users are alerted to an event as soon as it occurs and are directed to the location of the event.

Flexibility

Ockular enables permissions to be given to users. There are four default user accounts configured upon installation. Additional accounts can be created by the administrator.

Fire System Maintenance

A maintainer's area provides dedicated functions for a fire alarm system's maintenance team. A comprehensive list of all fire devices along with their statuses, cause and effect rules and integration settings allows operators to quickly view a device, make changes and disable devices all from one workstation.

Standard Features

- Supports dual screens, allowing a dedicated screen for the 2D location images and a separate screen for listing active events and system management
- Fully configurable on site using administrator login
- Reports configuration mismatch errors – ensuring that the graphics system is properly maintained and updated whenever there are any panel configuration revisions
- Powerful event log filtering and reporting
- Manage the state of the fire system using a combination of graphical images and system controls
- Programmable macro buttons to perform panel control operations
- Full map navigation using configurable buttons or map areas
- Device analogue value reporting
- Perform device and zone disablements/enabements

Product Overview

Taktis touch screen repeater

The large, full colour graphical display with touch screen functionality, delivers information on the status of the fire alarm system to single or multiple locations.

Taktis Vision repeaters can be configured to offer full display and control to replicate the functionality of the fire control panel or to operate as a simple, display only device for applications where access to control the fire alarm system would be inappropriate.

Standard Features

- Robust, full colour, 7" 800 x 480 touch screen graphical display
- Full indication of all information displayed at the fire control panel
- Automatic display brightness adjustment
- Silenceable internal buzzer
- Connections Via: Control panel RS485 bus
- Option to connect to control panel network
- Low current, 24V DC powered

TAKTIS-VISION-N

Configurable Fire Alarm Repeater 24V DC



Product Overview

Fire Alarm Management Solution

Vizulinx is a fire alarm management solution which enables you to monitor your fire systems remotely.

Highly configurable using an embedded web server and simple configuration wizard, it can be used to pass fire system events via e-mail, SMS and Modbus.

Upgrade options to interface with two-way radio systems, ESPA telephone and pager modules. Speech diallers are available and connectivity via GSM will be provided for sites where internet connectivity is not available.

Event notifications are triggered and processed immediately. Email or mobile phone messages can be routed to any number of recipients based on the fire alarm event types. These include fire, pre-alarm, fault, disable, in test, technical alarm and security.

As events are sent immediately, this reduces false alarms as it allows alarms to be investigated before sounding to prevent unnecessary evacuation.

Modbus connectivity enables a simple, low-cost integration into building management systems.

RS232 serial connection is provided for compatible panels with 16 switched inputs (0V) to interface conventional fire alarm systems or any device providing a switched output.

Through Mass Notification, Vizulinx keeps the occupants and key emergency responders aware of alarm conditions with location description or area messages and required event actions.

Provides building managers & service organizations instant updates on any faults & fire alarm activity, thus providing convenience and time-saving efficiencies.

Standard Features

- Monitor fire alarm activity on your workstation or device
- Receive alerts by email, SMS or pager
- Easy user subscription function - opt in opt out via text
- Defined message notification for managers, engineers or building occupiers
- Compatible with Modbus protocols
- Configurable via web browser - No PC software required
- USB, WiFi connectivity (via dongle)
- Quick setup, user friendly operation
- Internal memory event log
- Isolated RS232 port
- A convenient and cost effective solution
- Housed or module only options
- DIN rail mountable (module only)

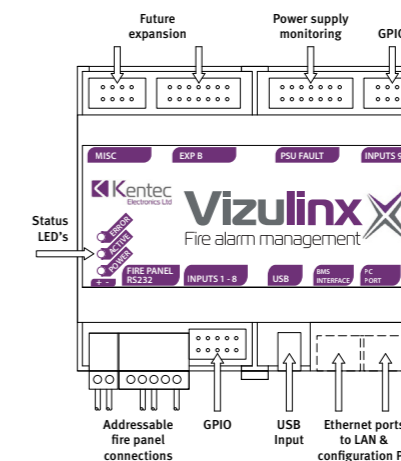
VIZULINX



Module Only

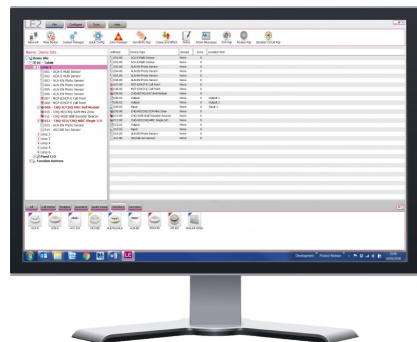


Housed Version



TAKTIS LOOP EXPLORER 2

Loop Explorer 2 (LE2) is a configuration software which is easy to use even when producing the most complex configurations.



Product Overview

LE2 is highly configurable, enabling customisation of languages, colour schemes and company logos and allowing exposure to single or multiple detector protocols to be set for each user.

Additional logical operators for NOT and TIME functions for use in cause and effects and the inclusion of 'groups' (collections of devices not necessarily in the same zone) increase the power and flexibility of LE2 to far beyond what was previously achievable.

LE2 can also be used to select, (where applicable) the appropriate detection loop protocol. It is possible to run different loop protocols on individual loop cards. Powerful standard templates allow rapid configuration of common fire system configurations for applications such as high-rise buildings or alarm verification from hotel rooms.

Access to LE2 is via a secure web server, so users with the appropriate credentials have permanent access to the latest version ensuring that the most recent enhancements are always available.

Standard Features

- Highly configurable software
- Powerful standard templates allow rapid configuration
- Taktis Virtual Resource subscribers can store LE2 configuration files
- Enables customisation of languages, colour schemes and company logos
- Cause and effect allows the configuration of large, complex networks with ease.

TAKTIS VIRTUAL RESOURCE - Coming Soon

Virtual Resource is an advanced management tool for fire detection which provides system designers, integrators and service companies with the ability to remotely access and comprehensively manage any system using intelligent analysis of data collected from their systems. End-users and facilities managers can also greatly benefit from the powerful feature set that comes with Virtual Resource.



Product Overview

The remote management features offered by Virtual Resource can result in reduced fault call outs, reduction of unwanted alarms and improved overall service to the end user.

Gain access to data from all your systems, assess performance, check status and make decisions based on facts, not assumptions.

VR Access allows your fire system to periodically report its status to the secure servers to enable you to view the latest status report via any web enabled device.

Whether you are a service provider, building owner or facilities manager, Taktis VR can help you reduce costs, add value and improve service integrity by employing the latest communication and analytical technologies.

Standard Features

- Proof of Testing - Virtual Resource records the fire alarm control panel activity, including specific details of device status and identify information so you can be assured that testing has been carried out and it reduces inaccuracy.

Standard Features Cont.

- Extended and Searchable Logs - Virtual Resource provides an extended searchable event log.
- Asset List - Virtual Resource creates and maintains an asset list of all the fire alarm components quantifying and detailing each panel, loop, addressed device, and device type with descriptive labels.
- Reports- Virtual Resource records servicing and weekly test activity to specific logs in pre-defined annual summary format. Users may also generate specific reports based on their own search criteria: Date/Time, Mode, Event, Panel, Loop, Device and protocol partners.
- Confirmed Fire events- Reduce false alarms with the Virtual Resource Confirmed Fire event
- Notifications - Event notifications are sent by:
 - Email
 - Mobile phone application
 - Secure IP monitored applications
- File Storage - Virtual Resource provides the ability to attach and store electronics files.
- Virtual Resource Android Phone Application - 3 different available applications include Notify, Weekly Test and Engineer



TAKTIS-TS1
Taktis Fire Panel
(H) 585 x (W) 420 x (D) 167



TAKTIS-TS2
Taktis Fire Panel
(H) 710 x (W) 500 x (D) 169



TAKTIS-TS3
Taktis Fire Panel
(H) 1065 x (W) 560 x (D) 239



TAKTIS-VISION-N
Configurable Fire Alarm Repeater
24V DC



TAKTIS-K772
16 Channel I/O Board



TAKTIS-K791
8 Way Relay Board



TAKTIS-K792
8 Way Conventional Zone Board

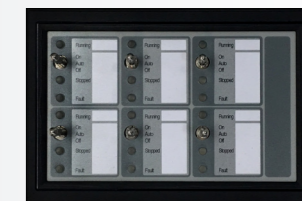


TAKTIS-K793
4 Way Sounder Board

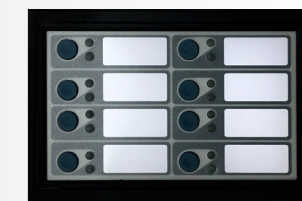
TAKTIS-KAU2044
Taktis Fan Controller (5)
(Master Module)



TAKTIS-KAU2060
Taktis Fan Controller (6)
(Slave Module)



TAKTIS-KAU2045
Taktis Ancillary Module (8)



TAKTIS-KAU2046
Taktis LED Module (32)
Selectable columns:
Green, Red, Amber



TAKTIS-ASE
Select your ASE Bracket



EVAC-SD-FACIA
Taktis OWS Control and Microphone



TAKTIS-SECRDU
Securiton (2)
Control Display



TAKTIS BATTERY BOX
TAKTIS-BBS1
(H) 230 x (W) 420 x (D) 167
TAKTIS-BBS2
(H) 300 x (W) 500 x (D) 169
TAKTIS-BBS3
(H) 395 x (W) 560 x (D) 239



ANALOGUE SENSORS


The below chart shows each panel and its corresponding detectors, along with a recommended solution for each site. Where a site has a FFE9000 or FFE10000 panel and only HRE detectors, (Red column below) the only solution is to change the entire fire system. If a site has Firenet panels there may be an option to update the system by changing only the panels as can be seen on the opposite page.

PRODUCTS:
 - FFE9000
 - FFE10000
 - AB3000



Solution
 (1) Replace Fire system

PRODUCTS:
 - FIRENET





















Solution
 (1) Possibility to upgrade loop card to link to HRE detectors (to be confirmed with Incite Fire)
 (2) Continue to maintain system with available parts
 (3) Upgrade system with Syncro / Taktis panels

PRODUCTS:
 - Syncro (Hochiki Product)
 - Taktis (Hochiki Product)

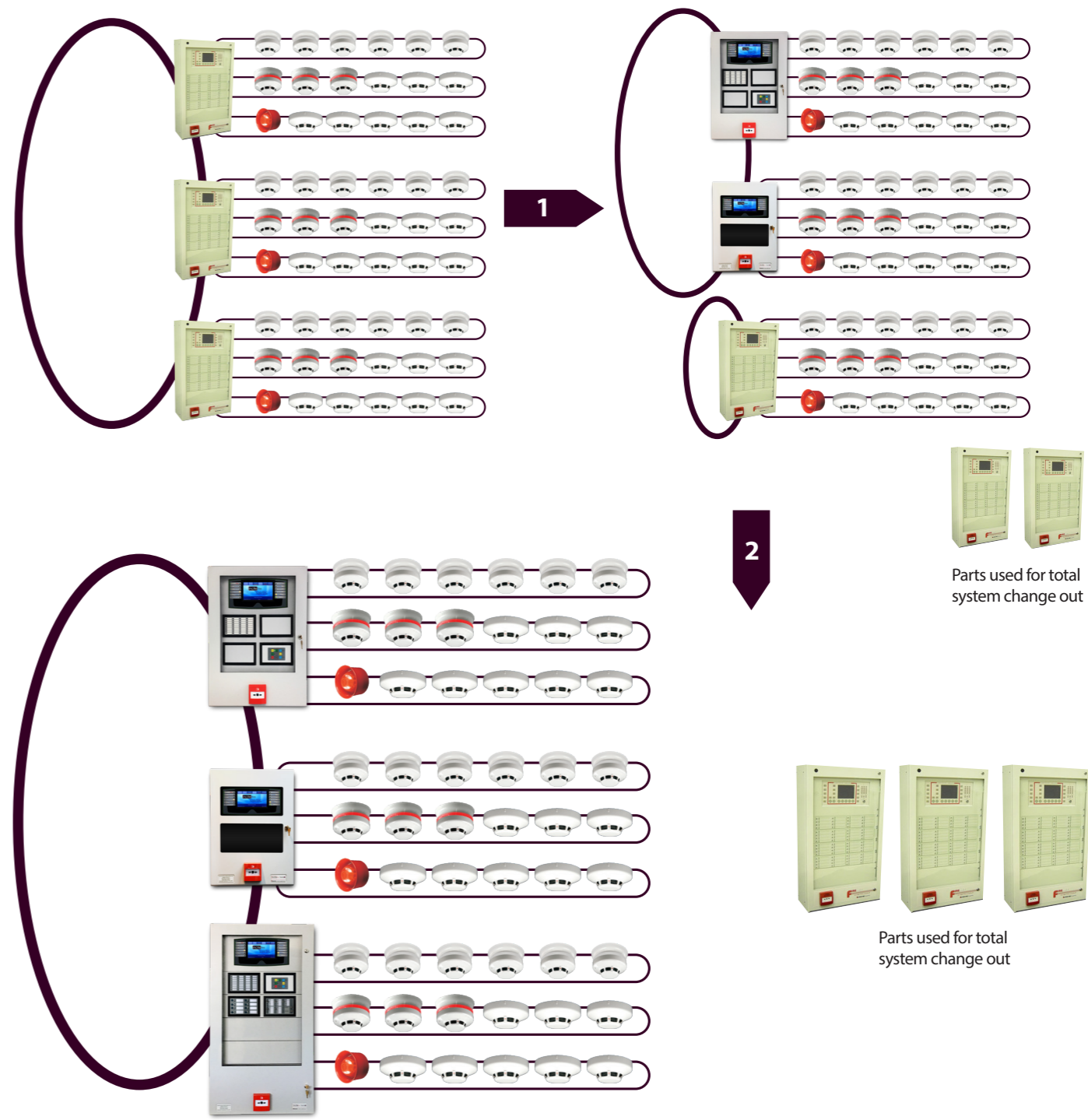


Solution
 (1) Continue as is for the future

ANALOGUE SENSORS	HRE DETECTORS	HRE DETECTORS	GTP DETECTORS	GTP DETECTORS	ESP DETECTORS
PHOTO	 ALB-E	 ALB-E	 ALG-AS	 ALK-AS	 ALK-ASN
ION	 AIA-E	 AIA-E	 AIE-AS	 AIE-AS	
HEAT	 ATA-E	 ATA-E	 ATG-AS	 ACB-AS(*)	 ACB-ASN
HEAT WATER-PROOF			 ACB-ASW	 ACB-ASW	 ACB-ASNW
MULTI			 AAM	 ACA-E	 ACA-ASN
COLOUR	IVORY	IVORY	IVORY	IVORY	WHITE
BASE	YBF-RL/2NBF	YBF-RL/2NBF	YBN-R/2NA	YBN-R/2NA	YBN-R/3(WHT)

All Hochiki GTP loop protocol devices will work with Syncro and Taktis
 (*) Operates in fixed temperature mode only as per ATG-AS

FIRENET CHANGE OUT SOLUTION



Only Use Compliant Products When Performing Changeouts

"Hochiki Australia's AS approved Analogue Sensors (excluding HRE protocol sensors and Conventional Detectors) are compatible, tested and approved for use with the following fire control panels:

- Manufacturer Kidde Australia Pty Ltd/Model: NFP1&2, Phoenix, FIRENET
- Manufacturer Kentec Electronics Ltd /Model: Syncro AS, Taktis"

For further information please contact: FireNet Support Team (02) 9644 7144-PRESS 2.



AFP : 2014

**YBN-R/3(WHT)
YBN-R/3(RED)
YBN-R/3(BLK)**



Product Overview

A **Common Mounting Base** which is fully compatible with ALK-ASN, ACA-ASN and ACB-ASN sensors. Supplied with square cable clamps for secure and reliable cable termination and is also capable of driving a remote LED if required.

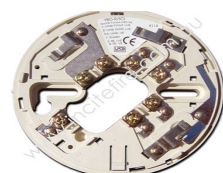
(Red version – YBO-R/3(RED) for use with CHQ-WS2 Wall Sounder and CHQ-WSB Wall Sounder Beacon)

Standard Features

- Electronics free
- Stainless steel contacts
- Takes 2.5mm 4 cables
- Slim profile – only 8mm
- Rugged wiring contacts
- Facility for remote indicator
- Quick connection via square cable clamps
- Available in RED for use with CHQ-WS2 Wall Sounder and CHQ-WSB Wall Sounder Beacon

YBN-R/3(WHT)-SCI

Product Overview



Model YBN-R/3(SCI) is a sensor mounting base featuring an integral short-circuit isolator which will detect and isolate short-circuits on the loop. When a short-circuit is detected during power up the unit will drop the power to the rest of the loop. The YBN-R/3(WHT)-SCI is compatible with Hochiki Analogue sensors, beacons, sounders and indicators and does not require a loop address. A remote fire LED facility is provided when a sensor is attached to the base.

NOTE: A fitted sensor will still be powered when this device is isolating.

Standard Features

- Features integral SCI
- Easy to fit
- Slim profile
- Matches standard base colours

CHQ-WS2

Product Overview



An **Addressable Loop-Powered Wall Sounder** providing 8 volume levels and 51 tones with a maximum output of up to 102 dB(A) (± 2 dB(A)) with low current consumption.

Special bases available: YBO-R/3(RED), YBO-R/SCI(RED), YBO-R/3(WHT) and YBO-R/SCI(WHT-SNDR).

Standard Features

- Loop powered
 - Single loop address – addressed via the TCH-B200 hand held programmer
 - Variable sound output 90 ~ 102 dB(A) (± 2 dB(A)) output at 1m
 - Fits Hochiki standard or isolator base
 - Weatherproof kit available
 - 51 User-selectable tones (all tones EN54-3 compatible)
 - Auto-shutdown mode available*
- * Please ensure control panel compatibility

CHQ-WSB

Product Overview



An **Addressable Loop-Powered Wall Sounder Beacon** as per the CHQ-WS2 but additionally featuring an integral beacon within the horn which utilises high intensity LED technology.

Special bases available: YBO-R/3(RED), YBO-R/SCI(RED), YBO-R/3(WHT) and YBO-R/SCI(WHT-SNDR).

Standard Features

- As per CHQ-WS2 plus:
 - Variable flash frequency*
 - High intensity LED technology
 - Independent control of sounder and beacon*
 - Auto-shutdown mode available – can be set independently for sounder or beacon*
- * Please ensure control panel compatibility

Product Overview

A **photoelectric Smoke Sensor** incorporating Hochiki's unique High Performance Chamber, allows the sensor threshold level to be increased, improving the signal to noise ratio and reducing susceptibility to false alarms.

Standard Features

- High Performance Chamber
- Twin alarm LEDs allow 360° viewing
- Locking mechanism (sensor to base)
- Variable sensitivity
- Electronically addressed
- Compatible Bases: YBN-R/3(WHT), YBO-BS(WHT), YBO-BSB(WHT), YBN-R/3-R/SCI
- Approval: AS7240.7

ALK-ASN



Product Overview

Model ACC-ASN is a Multi-Sensor, which is fully compatible with Hochiki Analogue Addressable Protocol, and incorporates a thermal element and High Performance photoelectric smoke chamber.

Standard Features

- User selectable modes
- Incorporates Optical & Heat elements
- Removable, High Performance Chamber
- Twin fire LED's allow 360° viewing
- Pulsing/non-pulsing controlled from panel
- Variable sensitivity
- Electronically Addressed
- Approvals. AS7240.5 & AS7240.7
- Available in White colour

ACC-ASN



Product Overview

An **IP67 Rated Waterproof Multi-Heat Sensor** which can be used externally and is supplied with its own fixing base which is used to fix the sensor. Flying leads from the sensor connect directly to the loop via waterproof connectors.

Standard Features

- User selectable modes
- Incorporates fixed temperature and rate of rise heat elements
- Twin alarm LEDs allow 360° viewing
- Pulsing/non-pulsing controlled from panel
- Electronically addressed
- IP67 rated
- Supplied with fixing base
- AS7240.5 Classes A1,AIR,AIS,B,BR,BS,C,CR,CS, Fixed and ROR

ACB-ASN



Product Overview

A **multi-Heat Sensor** incorporating a variable Fixed Temperature heat element and a Rate Of Rise heat element, both controlled from the Control Panel allowing either thermal element or both elements simultaneously to be active in making the fire decision.

Standard Features

- User selectable modes
- Incorporates Fixed Temperature and Rate of Rise Heat elements
- Twin alarm LEDs allow 360° viewing
- Electronically Addressed
- Compatible Bases: YBN-R/3(WHT), YBO-BS(WHT), YBO-BSB(WHT), YBN-R/3-R/SCI
- AS7240.5 Classes A1,AIR,AIS,B,BR,BS,C,CR,CS, Fixed and ROR

ACB-ASN



CHQ-CB



Product Overview

An Addressable Loop-Powered Ceiling Beacon, with a high intensity LED and a custom designed free-form optic which produces a highly visible flash. Coverage diameters include 5m, 7.5m, 10m and 15m diameter. The unit is designed to fit the YBN-R/3, YBN-R/3(SCI), YBO-BS or the YBO-R/SCI(RED), and is available in red or white LEDs.

Standard Features

- Loop Powered
- Single loop address via TCH-B200
- High Intensity LED technology
- 0.5/1 Hz flash frequency
- Choice of 2 LED colours (red and white)
- Approved to AS7240.23 – Category 'C'
- Operating voltage 17-41 Vdc

CHQ-WB



Product Overview

An Addressable Loop-Powered Wall Beacon, with a high intensity LED and a custom designed free-form optic which produces a highly visible flash. Coverage diameters include 5m, 7.5m, 10m and 15m diameter. The unit is designed to fit the YBN-R/3, YBN-R/3(SCI), YBO-BS or the YBO-R/SCI(RED), and is available in red or white LEDs.

Standard Features

- Loop Powered
- Single loop address via TCH-B200
- High Intensity LED technology
- 0.5/1 Hz flash frequency
- Choice of 2 LED colours (red and white)
- Approved to AS7240.23 – Category 'W'
- Operating voltage 17-41 Vdc

**CHQ-MRC(SCI)
CHQ-MRC(DIN)**



Product Overview

A Mains Relay Controller providing a single, mains rated relay output for the control of such devices as dampers, extractors or plant and equipment shutdown. The monitored input can be used for local power supply fault monitoring or as a general purpose input. Also available as a DIN Rail mountable version.

Both models feature an integral short-circuit isolator.

Standard Features

- Loop-powered
- Single loop address
- Single mains rated relay contact
- Relay contact rated at 250Va.c. @ 5 amp (resistive) & 48Vd.c. @ 2 amp (resistive)
- Auxiliary monitored input
- Screw terminals & flying leads for easy cable termination
- DIN rail version available
- Both models feature an integral short-circuit isolator

**CHQ-DIM(SCI)
CHQ-DIM(DIN)**



Product Overview

A Dual Input Module designed to interface to a variety of inputs such as door contacts, sprinkler flow/door switches and plant equipment. Also available as a DIN Rail mountable version. Both models feature an integral short-circuit isolator.

Standard Features

- Loop powered
- Single loop address
- Two independent inputs for monitoring of volt-free contacts
- Each input can be configured to monitor either normally open or normally closed contacts
- DIN rail version available
- Both models feature an integral short-circuit isolator

**CHQ-PCM
CHQ-PCM(DIN)**



Product Overview

A Plant Control Module with four independent change-over relay outputs, with N/O and N/C volt free contacts and four inputs. These outputs can be driven separately by the fire alarm control panel and can be used for the control of devices such as dampers or for plant and equipment shutdown. Also available as a DIN Rail mountable version. Both models feature an integral short-circuit isolator.

Standard Features

- Single loop address
- Loop powered
- 4 change-over relay outputs
- 4 independent inputs for monitoring of volt-free contacts
- Each input can be configured to monitor either normally open or normally closed contacts
- DIN Rail version available
- Both models feature an integral Short-Circuit Isolator

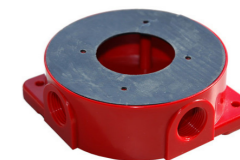
Product Overview

A Weatherproof Back Box and gasket set for the CHQ-WS2 Wall Sounder and the CHQ-WSB Wall Sounder Beacon, increases the IP Rating of the Sounder to IP65 for external use.

Standard Features

- Designed for CHQ-WS2 and CHQ-WSB
- Increases sounder IP rating from IP21 to IP65 (external use)
- Easy to install

WS2-WPK



Product Overview

An Addressable Loop-Powered Base Sounder, providing 13 volume levels and 51 tones with a maximum output of up to 98 dB(A) (± 2 dB(A)) with low current consumption. The unit is designed to fit either the YBN-R/3 or the YBO-R/SCI Bases.

Standard Features

- Loop powered
- Single loop address – addressed automatically by control panel or via the TCH-B200 hand held programmer
- 50 – 98 dB(A) (+2dB(A)) output at 1m
- Fits Hochiki standard or isolator base and supports ESP sensors, beacons and remote indicator
- 51 User-selectable tones (all tones EN54-3 compatible)

YBO-BS(WHT)



Product Overview

An Addressable Loop-Powered Base Sounder Beacon, providing 13 volume levels and 51 tones with a maximum output of up to 98 dB(A) (± 2 dB(A)) with low current consumption. The unit is designed to fit either the YBN-R/3 or the YBO-R/SCI Bases.

Standard Features

- Loop powered
- Single loop address, addressed by either Control Panel or TCH-B200
- 50 – 98dB(A) (± 2 dB(A)) output at 1m
- Fits Hochiki standard or isolator base and supports ESP sensors, beacons and remote indicator
- 51 User-selectable tones (all tones EN54-3 compatible)
- Beacon and sounder can be controlled

YBO-BSB(WHT)



Product Overview

An Addressable Loop-Powered Beacon, with high-intensity LEDs and a Fresnel lens design which produces a highly visible flash. The casing exactly matches the Hochiki Analogue Sensor range in shape and colour providing seamless integration.

Standard Features

- High Intensity LED technology
- 1 Hz flash frequency
- Addressable via TCH-B200
- Up to 127 devices per loop
- Choice of 3 lens colours (red, amber and blue)

CHQ-AB(WHT)



Product Overview

An Addressable Loop-Powered Remote Indicator, with high-intensity LEDs and a Fresnel lens design which produces a highly visible signal. The casing exactly matches the Hochiki Analogue Sensor range in shape and colour providing seamless integration. The unit also features two monitored inputs.

Standard Features

- High Intensity LED technology
- Addressable via TCH-B200
- Up to 127 devices per loop

CHQ-ARI(WHT)



CHQ-POM

Product Overview

A **Powered Output Module** designed to supply a nominal 24 V dc at various, user-selectable current levels from 2 to 32 mA (in increments of 2mA). The unit is small enough to be added to other third-party devices thereby allowing a range of equipment to be added to the analogue loop.

The unit also features two monitored inputs.



Standard Features

- Supplies a nominal 24 V dc at various current levels, 2 mA to 32 mA in increments of 2 mA
- User-selectable current output
- Includes two monitored inputs
- Small design, provides simple connectivity to analogue loop for third-party devices
- Colour-coded flying leads for simple installation
- Addressed with TCH-B200 hand held programmer

CHQ-SIM

Product Overview

A **Single Input Module** designed to allow a single monitored input to be connected to the analogue loop. This provides a compact, low-cost option where the installation of the larger CHQ 'Smart-Fix' range of modules might be difficult.



Standard Features

- Includes a single monitored input
- Small design for simple provision of a monitored input onto an analogue loop
- Flying leads for easy installation
- Addressed with TCH-B200 hand held programmer

CHQ-SOM

Product Overview

The **CHQ-SOM** has been designed to allow a single relay output to be connected to the ESP loop. The unit incorporates a volt-free relay contact that can be configured as either N/O or N/C, the relay contact is rated to 30 V dc (max), 1 A (resistive load).

The CHQ-SOM features three colour-coded flying leads, the unit also features a wiring terminal block for loop connection.



Standard Features

- Includes a single monitored output
- Small design for simple provision of a monitored output onto an ESP loop
- Flying leads for easy installation
- Addressed with TCH-B100 Hand Held Programmer
- Approved by LPCB

CHQ-ADAPTOR

Product Overview

The **CHQ-ADAPTOR** is designed to allow the "Smart-Fix" range of CHQ Modules to be housed in existing enclosures originally designed for the first generation CHQ-OEM Modules by modifying the 'footprint' of the unit.



Standard Features

- Allows the PCB component of a CHQ
- Module to be housed in an enclosure
- Footprint matches older enclosure sizes

Product Overview

A **Dual Relay Controller** designed to provide two general-purpose relay outputs, each output can be controlled independently and used to control dampers, plant and equipment shutdown. The monitored input can be used for local power supply fault monitoring or as a general-purpose input. Also available as a DIN rail mountable version.

Both models feature an integral short-circuit isolator.

Standard Features

- Loop powered
- Single loop address
- Two independently controlled changeover relays
- Relays contact rated at 30Vd.c. at 1 amp
- Auxiliary monitored input
- DIN rail version available
- Both models feature an integral short-circuit isolator

CHQ-DRC(SCI)
CHQ-DRC(DIN)



Product Overview

A **Dual Zone Module** designed to allow up to 60 conventional detectors (30 per zone) to be interfaced to Hochiki's analogue addressable system. Also available as a DIN Rail mountable version. Both models feature an integral short-circuit isolator.

Standard Features

- Single loop address
- Supports two independent zones of conventional detectors
- Both zones fully monitored for Short/ Open Circuit
- Requires an auxiliary 24Vd.c. supply
- DIN rail version available
- Both models feature an integral short-circuit isolator

CHQ-DZM(SCI)
CHQ-DZM(DIN)



Product Overview

A **Dual Sounder Controller**, which has been designed to provide two sounder outputs (that can be driven separately) with full fault monitoring. The monitored input can be used for local power supply fault monitoring or as a general-purpose input. Features an integral short-circuit isolator.

Standard Features

- Single loop address
- Two independent sounder circuits
- Each circuit fully monitored for Open and Short Circuit faults
- Each alarm circuit fused at 1 amp
- Auxiliary monitored Input
- Outputs are synchronised and can be driven continuously or intermittently
- 24Vd.c. auxiliary power required
- Features an integral short-circuit isolator

CHQ-DSC(SCI)
CHQ-DSC(DIN)



Product Overview

A **Single Zone Monitor** designed to allow up to 6 conventional detectors to be interfaced to Hochiki's analogue addressable system. Also available as a DIN Rail mountable version. Both models feature an integral short-circuit isolator.

Standard Features

- Loop powered
- Up to 6 Conventional Detectors
- Single loop address
- Remote LED output
- Fully monitored for Short and Open Circuit faults
- DIN rail version available
- Both models feature an integral short circuit isolator

CHQ-SZM(SCI)
CHQ-SZM(DIN)



CHQ-BACKBOX



Product Overview

The **CHQ-Backbox** is designed for installations where the CHQ range of modules - CHQ-DIM(SCI), CHQ-SZM(SCI), CHQ-DZM(SCI), CHQ-DSC(SCI), CHQ-MRC(SCI), CHQ-DRC(SCI) and CHQ-PCM - require mounting within a glanded enclosure.

Standard Features

- Provides glanded cable connections
- Robust design
- Compatible with all CHQ modules

MBB-1



Product Overview

Splashproof Base Backbox providing a splash proof and secure fixing for the Hochiki analogue and conventional marine approved range of sensors and detectors and their associated bases. Provides an aesthetically pleasing solution where surface fixed devices are required. The housing supports four 20mm glanded entries for cabling access.

Standard Features

- 4 glanded cable entry holes (glands not supplied)
- Colour matched
- Approved detector and base range
- Provides moisture and dust resistant fitting
- Ideal for bulkhead fitting
- Suitable for marine use

YBO-BS-COV(W)



Product Overview

Protective Cap. A protective cap which can be fitted to the YBO-R/SCI(WHT) isolator base, YBO-BS(WHT) or YBO-BSB(WHT) sounder bases when these devices are being used without a detector fitted.

Standard Features

- Protects wiring terminals on isolator bases and base sounders
- Easy to fit
- Available in ivory or white

SMB-1 SMB-2 SMB-3



Product Overview

An **IP66 rated, grey (RAL7035) enclosure** designed for use with the Hochiki range of Modules. Supplied with a transparent black lid as standard. Used in conjunction with the SMB-ADAPTOR this enclosure can house any of the PCB assemblies from the Hochiki Smart-Fix module range

Standard Features

- Quick-release screws
- Polyurethane gasket provides IP66 protection
- Corrosion free, resistant to most alkaline and acid
- Temperature resistance to +70°C, Impact resistant, and Nonflammable
- 32 knock-outs
- SB-1 Dimensions L 254 x W 180 x H 90
- SB-2 Dimensions L 254 x W 180 x H 160
- SB-3 Dimensions L 180 x W 110 x H 165

DH-98-ASA



Product Overview

A **Duct Probe Housing** associated with analogue ALK-ASN detectors and to be mounted on the outside of an air duct for the purpose of monitoring the air within the duct. (shown with sensor fitted - not supplied). Allows air duct sampling using standard detector or sensor.

Standard Features

- Test hole on cover. Simple installation/maintenance. Sensitive flow indication
- Installer-friendly connection of cables.

Product Overview

Addressable manual call point

Standard Features

- Fast Response
- Status LED
- Addressed using handheld programmer
- Complete with back box

HCP-E-ADD



Product Overview

Weatherproof addressable manual call point

Standard Features

- Fast Response
- Status LED
- Addressed using handheld programmer
- Complete with back box
- IP rated IP67

HCP-E-ADD-WP



Product Overview

Alarm Acknowledgement Facility. Used to allow local alarm investigation prior to signalling full alarm outputs.

Standard Features

- Fully compatible with the Syncro AS range
- Meets AS7240.2 requirements
- Acknowledge time settings 30 or 60 seconds
- Investigate time between 30 to 180sec in 30 sec intervals
- Button to acknowledge false alarm
- Loop powered - no external power required
- Fits standard Australian mounting block

TAKTIS-AAF



Product Overview

A **hand held address programmer** designed to address the range of detectors and other addressable devices such as the YBO-BS(WHT) base sounder. Designed to be light, robust and easy to use it operates from a single PP3 size 9v battery which can provide up to 8000 operations.

Standard Features

- Lightweight design
- Quick and reliable addressing
- Up to 8000 address settings from one battery

TCH-B200



TCH-200 : Includes CO detection.

Sydney

Block Y, Unit 1, 391 Park Road, REGENTS PARK NSW 2143
Mail: PO Box 508 GYMEA NSW 2227
Phone: 1300 INCITE (1300 462 483) | 02 9644 7144
Fax: 02 9644 7255
Email: sales@incitefire.com.au
Technical support: support@incitefire.com.au

Melbourne

Address: Unit 120, 45 Gilby Road, MT WAVERLEY VIC 3149
Phone: 03 9544 2211
Fax: 03 9544 2212
Email: salesvic@incitefire.com.au

Brisbane

Address: 25 Jeays Street, BOWEN HILLS QLD 4006
Phone: 07 3252 5366
Fax: 07 3252 4099
Email: salesqld@incitefire.com.au

Perth

Address: 19 Halley Road, BALCATTA WA 6021
Phone: 08 9349 2972
Email: saleswa@incitefire.com.au